



Pressure Vessels



Heat Exchangers



Tube Bundles



Storage Vessels



Spherical Vessels

PRESSURE VESSELS (INDIA)



ISO & ASME Accredited Company

We are...

- ❑ Leading manufacturer & exporter of Pressure Vessels, Shell and Tube Heat Exchangers and Distillation Columns required for water treatment, chemical and petrochemical industries.
- ❑ An ISO 9001:2008 certified company established in the year 1986.
- ❑ Accredited by ASME for manufacture of Pressure Vessels under ASME 'U', 'R', 'NB'.
- ❑ Government of India Recognized STAR Export House.
- ❑ Approved by CCOE / PESO Nagpur for manufacture of Unfired Pressure Vessels.
- ❑ Major Supplier of equipment's under Council Directive 97/23/EC & CE certification.
- ❑ Manufacturer of equipments under ASME, PD 5500, IS 2825, PED 97/23/ECS, AD 2000 Merkblatt, JIS, SMPV Rules & API 650.
- ❑ Exporting more than 80% of the equipments manufactured to the different parts of the world.

Quality Policy



PRESSURE VESSELS (INDIA)

IS COMMITTED TO TOTAL CUSTOMERS SATISFACTION. WE WILL SUPPLY EXCELLENT QUALITY EQUIPMENTS, ON TIME AS PER CUSTOMERS SPECIFICATIONS & INTERNATIONAL STANDARDS AT OPTIMUM COST THROUGH TRAINING & MOTIVATING THE EMPLOYEES AND CONTINUAL IMPROVEMENT IN QUALITY MANAGEMENT SYSTEM.

Health Safety & Environment Policy

PRESSURE VESSELS (INDIA) IS COMMITTED TO BEING AN ENVIRONMENT FRIENDLY COMPANY IN ALL ITS ACTIVITIES, PRODUCTS, AND SERVICES AND TO PROVIDE SAFE AND HEALTHY WORKING ENVIRONMENT TO ALL EMPLOYEES AS AN INTEGRAL PART OF BUSINESS PERFORMANCE THROUGH:

- ❑ COMPLIANCE WITH APPLICABLE LEGISLATION AND REGULATIONS.
- ❑ CONTINUAL IMPROVEMENT IN THE OCCUPATIONAL HEALTH, SAFETY AND ENVIRONMENTAL MANAGEMENT SYSTEMS PERFORMANCE.
- ❑ PROMOTION OF ACTIVITIES FOR CONSERVATION OF RESOURCES BY ENVIRONMENTAL MANAGEMENT.
- ❑ ENHANCEMENT OF ENVIRONMENTAL, SAFETY AND OCCUPATIONAL HEALTH AWARENESS AMONGST EMPLOYEES, CUSTOMERS AND SUPPLIERS BY PROACTIVE COMMUNICATION AND TRAINING.
- ❑ PERIODICAL REVIEW OF OCCUPATIONAL HEALTH, SAFETY & ENVIRONMENTAL MANAGEMENT SYSTEMS TO ENSURE ITS CONTINUING SUITABILITY, ADEQUACY AND EFFECTIVENESS.
- ❑ COMMUNICATION OF THIS HSE POLICY TO ALL EMPLOYEES AND INTERESTED PARTIES.
- ❑ COORDINATION WITH CONCERNED GOVERNMENT AGENCIES/ REGULATORY BODIES ENGAGED IN OCCUPATIONAL HEALTH, SAFETY & ENVIRONMENTAL ACTIVITIES.

Industries we serve..

- Water Treatment



- Oil & Gas



- Petrochemical



- Ship Building



- Chemical/
Fertilizer



- Steel Plant



- Defense

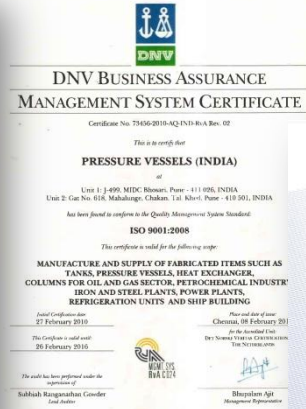
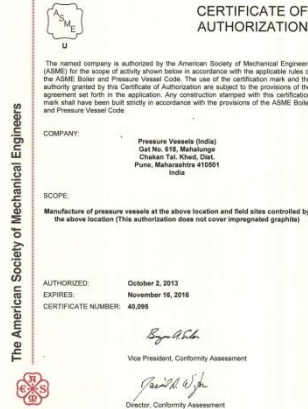
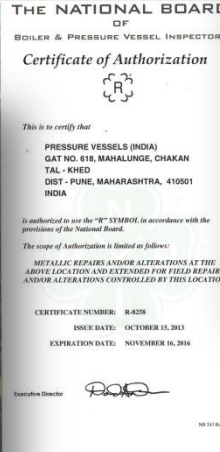


- Refrigeration



Certifications

■ ISO ■ 9001:2008 ■ ASME 'U' ■ ASME 'R' ■ National Board ■ HP-0 ■ PESO ■ Export House ■ Marine Classification Societies ■



Manufacturing Capabilities

1	Maximum Diameter	6 meter.
2	Maximum Length	30 meter
3	Rolling Capacity	Up to 75 mm
4	Dished End Pressing	Up to 5.2 meter x 56 mm (Single Piece Construction) Above 5.2 Meter – Petal Type Construction
5	Maximum Weight	Up to 150 Metric Tons

Design Capabilities

□ **Code we follow**

- ▣ ASME Section VIII Division 1 & Division 2
- ▣ PD 5500
- ▣ AD 2000 Merk Blatter
- ▣ EN 13445
- ▣ IS 2825

□ **Software available for Design**

- ▣ PV-Elite
- ▣ ANSYS

Quality

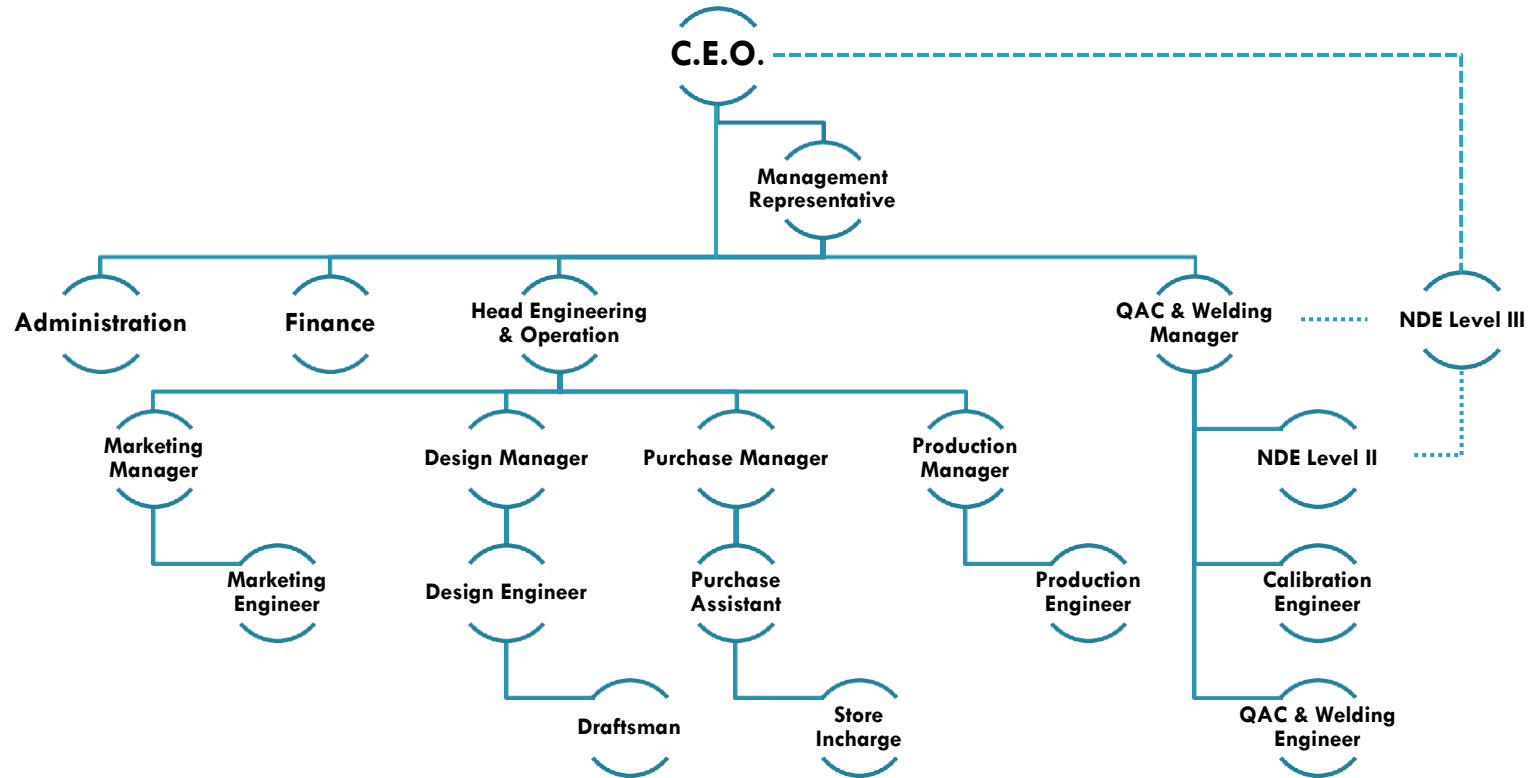
□ Testing Facilities – In house

- ▣ Dye Penetrant Test
- ▣ Radiography (viewing & interpretation)
- ▣ Magnetic Particle Test
- ▣ Hydrostatic Test
- ▣ Pneumatic Test

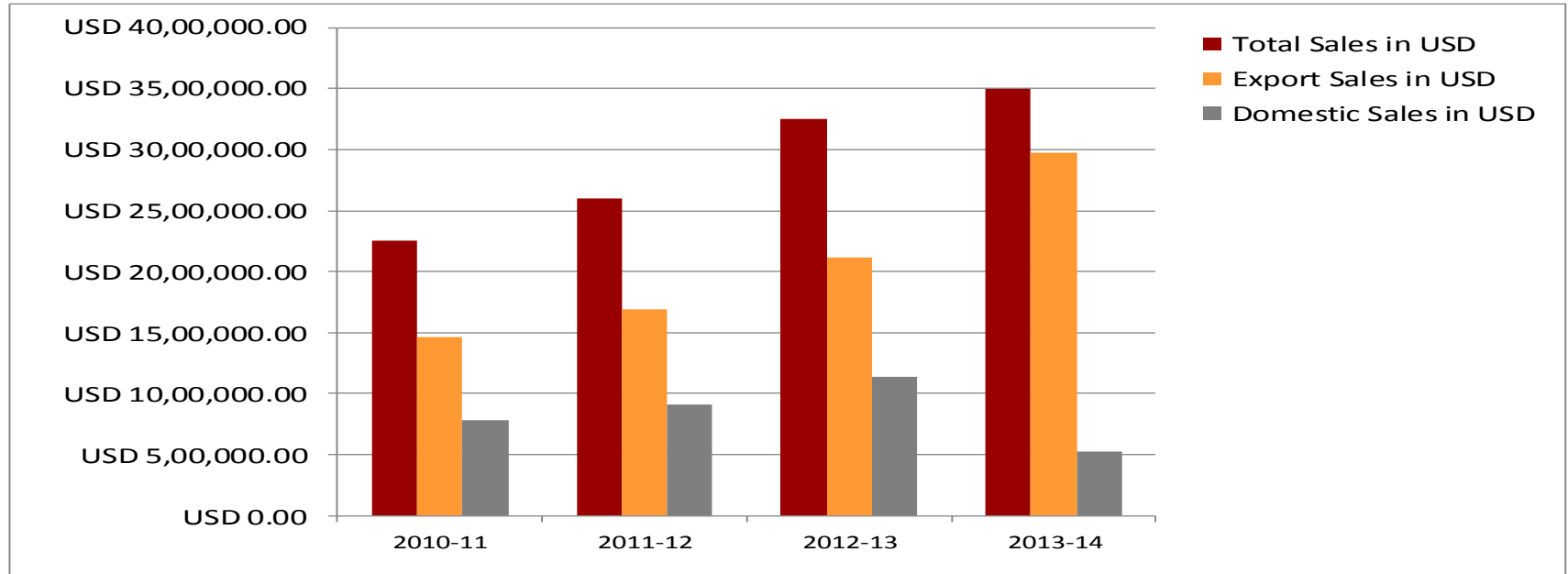
□ Testing Facilities – Outsourced

- ▣ Radiography (Processing)
- ▣ Helium Leak Test
- ▣ Mechanical & Physical Testing
- ▣ Ultrasonic testing
- ▣ PMI
- ▣ Hardness Testing

Organisation Structure



Sales over the years ...





MANUFACTURING FACILITIES

PVI - Chakan Plant

Covered Area 20000 Sq. Ft.

150 KM from JNPT

30 KM from Pune Air Port

25 KM from Pune Railway Station



Rolling Machine

Make : Sertom (Italy)

Rolling Capacity : up to 75 mm Thick

Rolling Span : up to 3 Meters



600 MT – Forming Press Machine

Make : PVI

Thickness : up to 50 mm Thick

Span : 5500 mm



700 MT – Forming Press Machine

Make : PVI

Thickness : up to 56 mm Thick

Span: up to 4500 mm



700 MT – Forming Press Machine

Make : PVI

Thickness : up to 56 mm Thick

Span: up to 4500 mm



Spinning Machine

Make : PVI

Diameter: 5 Meter

Thickness : 25 mm



EOT Cranes

Make : Electromech

Capacity : 25 MT

Quantity : 2 Nos.





PRESSURE VESSELS FOR WATER TREATMENT INDUSTRY

Condensing Polishing Units - Siemens

Design Code: ASME Section VIII Div. 1 & 2

Capacity : 32 M³

Design Pressure : 40 bar g.

Weight : 15 MT

Dimensions: 2800 mm Dia

Thickness: 32 mm Thk.



Flocculators – Black & Veatch (UK)

Design Code: PD 5500

With CE Marking

Design Pressure : 16 bar g.

Weight : 13 MT

Dimensions: 2200 mm Dia x 3000 mm Long

Coated Internally with 162 PWX Epoxy Paint



Pressure Filters – Black & Veatch (UK)

Design Code: PD 5500

With CE Marking

Design Pressure : 16 bar g.

Weight : 21 MT

Dimensions: 4000 mm Dia x 7500 mm Long

Coated Internally with 162 PWX Epoxy Paint



Mixed Bed Exchangers - Metito

Design Code: ASME Section VIII Div. 1

Design Pressure : 6 bar g.

Weight : 16 MT

Dimensions: 3000 mm Dia x 7500 mm Long

Internally Rubber lined. Specially Coated
Hardware

EPC : Abu Dhabi Polymer Company Ltd. UAE



Activated Carbon Filters – Metito

Design Code: ASME Section VIII Div. 1

Design Pressure : 10 bar g.

Weight : 12 MT

Dimensions: 3200 mm Dia x 7500 mm Long

Internally Rubber lined.

EPC : Abu Dhabi Polymer Co. Ltd. UAE



Activated Carbon Filters – Metito

Design Code: ASME Section VIII Div. 1

Design Pressure : 10 bar g.

Weight : 12 MT

Dimensions: 3200 mm Dia x 7500 mm Long

Internally Rubber lined.

EPC : Tasnee Petrochemicals



PRESSURE SAND FILTERS - AQUABORE INTERNATIONAL

Year : 2014

EPC Contractor : AQUABORE

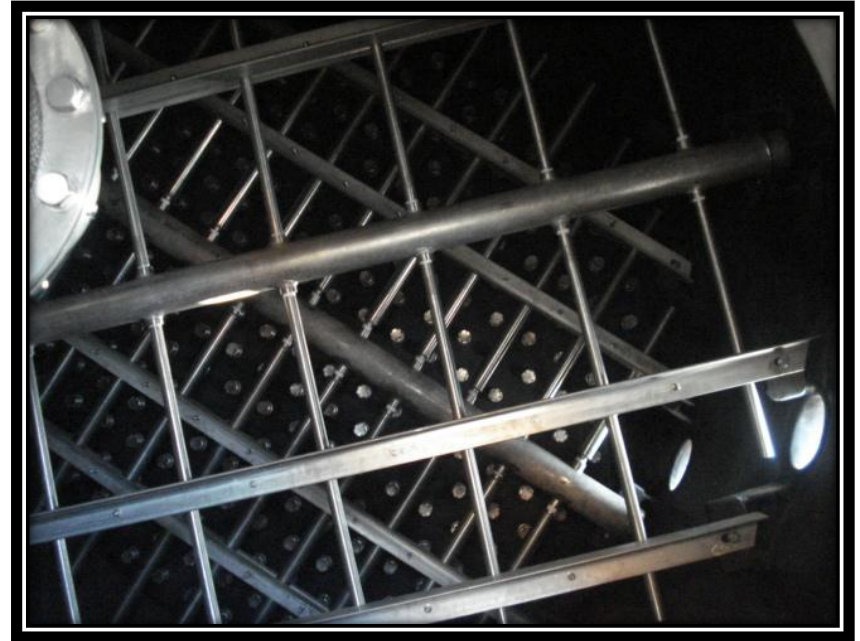
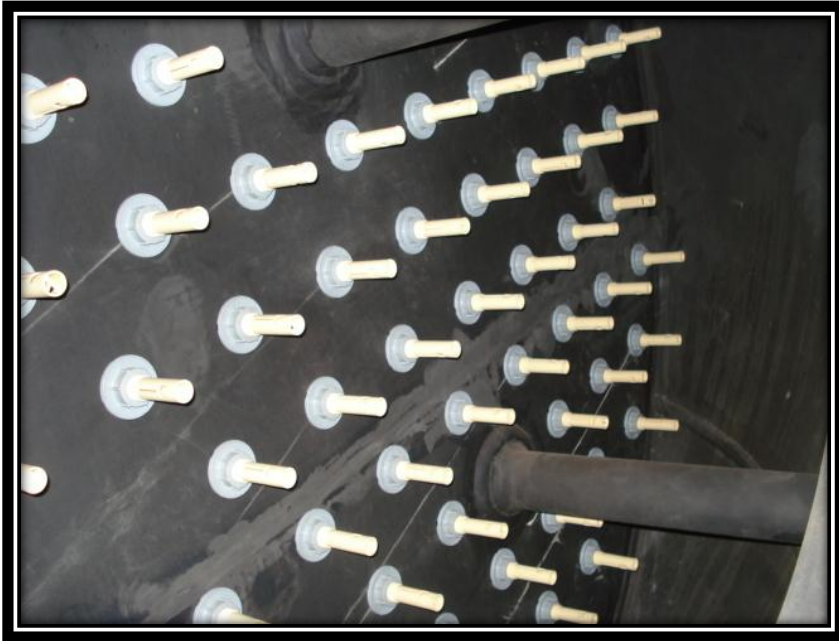
PMC : WTE (I) PVT. LTD.

Scope of Supply :

5 Pressure Sand Filters



Water Treatment Equipment - Internals





PRESSURE VESSELS FOR STEEL INDUSTRY

Pressurizing Gas Vessel – Tata Steel (Jamshedpur)

Design Code: PD 5500 + FEA

Capacity : 120 M³

Design Pressure : 44.1bar g.

Weight : 75 MT

Dimensions: 2750 mm Dia x 22500 mm Long

Thickness: 40 mm Thk. Shell / 50 mm Thk. Head



El Gas Vessel – Tata Steel (Jamshedpur)

Design Code: PD 5500 + FEA

Capacity : 80 M³

Design Pressure : 44.1bar g.

Weight : 50 MT

Dimensions: 2300 mm Dia x 18000 mm Long

Thickness: 36 mm Thk. Shell / 40 mm Thk. Head



El Gas Vessel – Tata Steel (Jamshedpur)

Design Code: PD 5500 + FEA

Capacity : 50 M³

Design Pressure : 44.1bar g.

Weight : 35 MT

Dimensions: 2400 mm Dia x 13000 mm Long

Thickness: 36 mm Thk. Shell / 40 mm Thk. Head



Pressurizing Gas Vessel – SAIL (Bhilai)

Design Code: ASME Section VIII Div. 1 + FEA

Capacity : 90 M³

Design Pressure : 19 bar g.

Weight : 30 MT

Dimensions: 2600 mm Dia x 18000 mm Long

Thickness: 20 mm Thk. Shell / 28 mm Thk. Head



Nitrogen Storage Vessel – JSW (Bellary)

Design Code: ASME Section VIII Div. 1

Capacity : 150 M³

Design Pressure : 18.2 bar g.

Weight : 50 MT

Dimensions: 3800 mm Dia x 15000 mm Long

Thickness: 28 mm Thk. Shell / 32 mm Thk. Head



Conveying Hoppers – SAIL (Bhilai)

Design Code: ASME Section VIII Div. 1 & 2

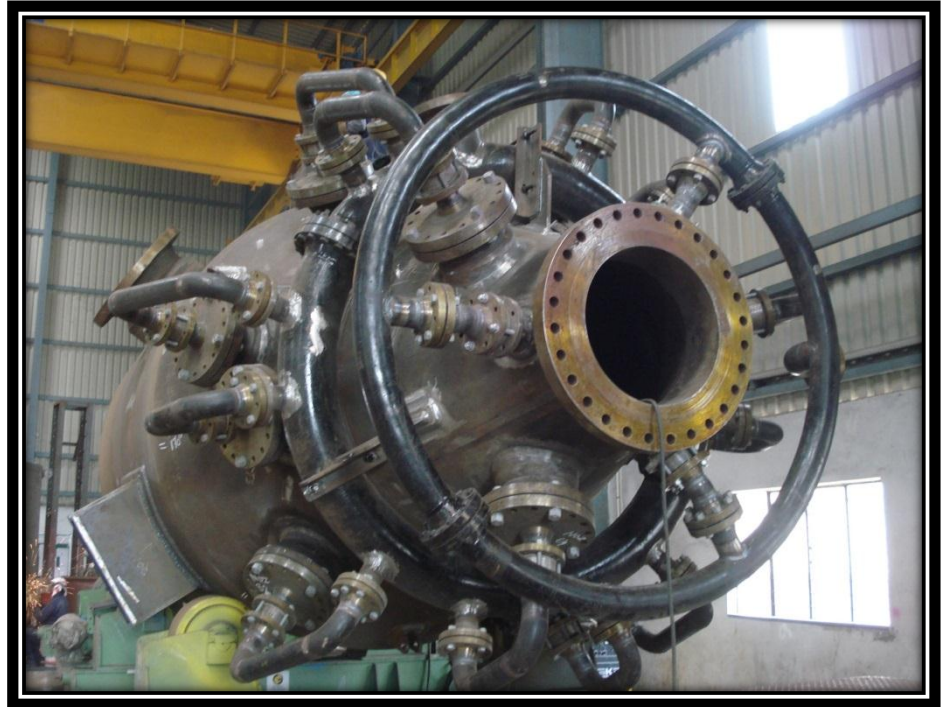
Capacity : 32 M³

Design Pressure : 19 bar g.

Weight : 30 MT

Dimensions: 3000 mm Dia x 7800 mm Long

Thickness: 45 mm Thk. Shell / 50 mm Thk. Head



Propane Storage Tank — Can For Manufacturing Cans (Egypt)

Design Code: ASME Section VIII Div. 1

Capacity : 45 MT

Design Pressure : 21.5 bar g.

Weight : 25 MT

Dimensions: 3800 mm Dia x 15000 mm Long

Thickness: 28 mm Thk. Shell / 32 mm Thk. Head





PRESSURE VESSELS FOR SHIP-BUILDING INDUSTRY

ZAMIL SHIPYARD – SAUDI ARABIA

Year : 2008 – 09

CUSTOMER : ROLLS ROYCE MARINE (NORWAY)

CLASSIFICATION SOCIETY : ABS

Scope of Supply :

30 BHS TANKS FOR 6 SHIPSETS



NAM CHEONG SHIPYARD – CHINA

Year : 2008 – 09

CUSTOMER : ROLLS ROYCE MARINE (NORWAY)

CLASSIFICATION SOCIETY : ABS

Scope of Supply :

20 BHS TANKS FOR 5 SHIPSETS



LANGSTEN - ROMANIA

Year : 2011 - 12

CUSTOMER : ROLLS ROYCE MARINE (NORWAY)

CLASSIFICATION SOCIETY : DNV

Scope of Supply :

10 BHS TANKS FOR 2 SHIPSET



PAXOCEAN - ROMANIA

Year : 2011 - 12

CUSTOMER : ROLLS ROYCE MARINE (NORWAY)

CLASSIFICATION SOCIETY : DNV

Scope of Supply :

10 BHS TANKS FOR 2 SHIPSETS



LABROY - ITALY

Year : 2010 - 11

CUSTOMER : ROLLS ROYCE MARINE (NORWAY)

CLASSIFICATION SOCIETY : RINA

Scope of Supply :

10 BHS TANKS FOR 2 SHIPSETS



ROSETTI MARINO - ITALY

Year : 2010 - 11

CUSTOMER : ROLLS ROYCE MARINE (NORWAY)

CLASSIFICATION SOCIETY : RINA

Scope of Supply :

20 BHS TANKS FOR 4 SHIPSETS



BREVIK - NORWAY

Year : 2010 - 11

CUSTOMER : ROLLS ROYCE MARINE (NORWAY)

CLASSIFICATION SOCIETY : RINA

Scope of Supply :

10 BHS TANKS FOR 2 SHIPSETS



COSCO SHIPYARD - CHINA

Year : 2010 - 11

CUSTOMER : ROLLS ROYCE MARINE (NORWAY)

CLASSIFICATION SOCIETY : ABS

Scope of Supply :

20 BHS TANKS FOR 4 SHIPSETS



NEW ORLEANS SHIPYARD - USA

Year : 2015 - 16

CUSTOMER : CARGOFLEXX B.V.

(THE NETHERLANDS)

CLASSIFICATION SOCIETY : ABS

Scope of Supply :

4 BHS TANKS FOR 1 SHIPSET



BHS TANKS – Rolls Royce Marine (Norway)

Design Code: ASME Section VIII Div. 1

Classification Society :ABS

MOC : SA 516 Gr 70

Weight : 18 MT



BHS TANKS – Rolls Royce Marine (Norway)

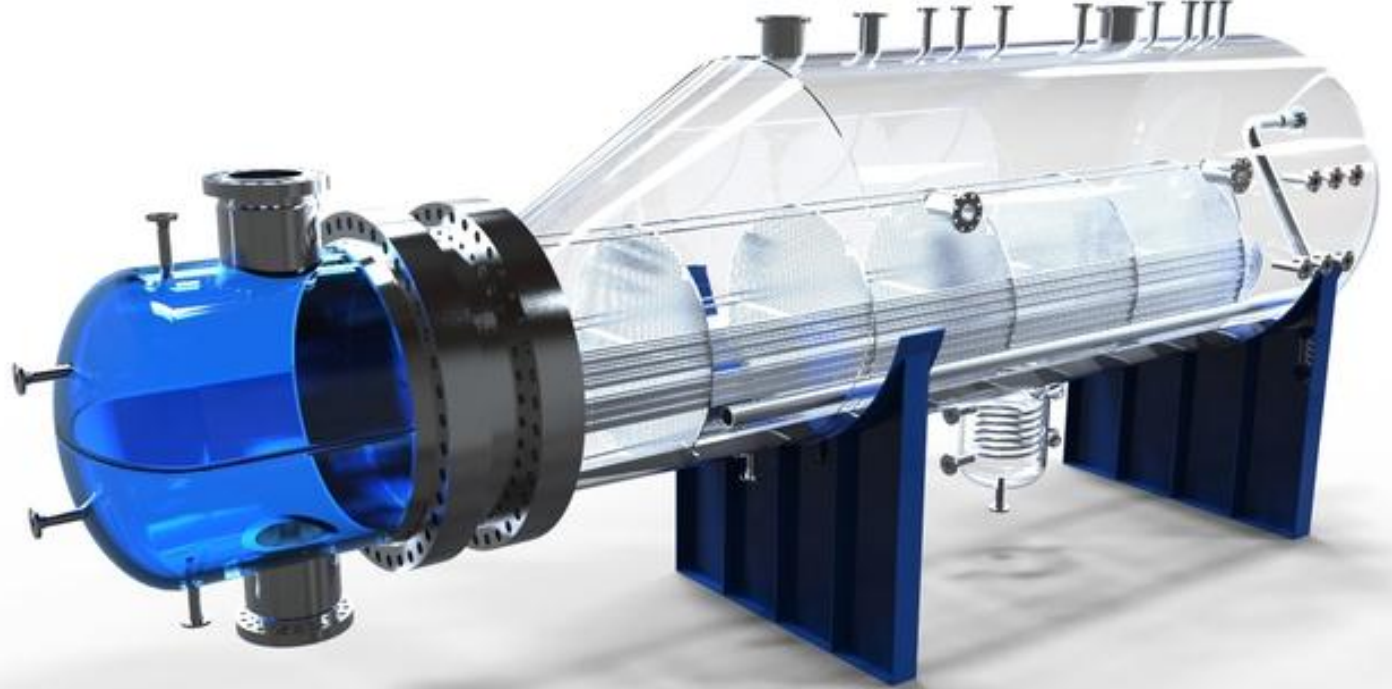
Design Code: ASME Section VIII Div. 1

Classification Society :DNV

MOC : SA 516 Gr 70

Weight : 18 MT





HEAT EXCHANGERS & TUBE BUNDLES

Falling Film Evaporator - Tecnicas Reunidas

Design Code: AD 2000 Merkblatt / TEMA

(CE Marked)

MOC : EN 1.4306

Weight : 25 MT



Falling Film Evaporator - Tecnicas Reunidas

Design Code: ASME Section VIII Div. 1 / TEMA

ASME "U" Stamped

MOC : SA 240 316L / SA 213 TP 316L

Weight : 17 MT



CO₂ Cooler – Johnson Controls

Design Code: ASME Section VIII Div. 1 / TEMA

MOC : SA 240 304 / SA 213 TP 304

Weight : 25 MT



Superheater – Hindustan Zinc Ltd.

Design Code: ASME Section VIII Div. 1 / TEMA

MOC : SA 516 Gr 70 / P11

Weight : 65 MT



LPG Column Condenser – ONGC Hazira

Design Code: ASME Section VIII Div. 1 / TEMA

MOC : SA 516 Gr 70 / SA 1179

Weight : 25 MT



Forced Circulated Heat Exchanger - AIC

Design Code: ASME Section VIII Div. 1 / TEMA

MOC :

SA 240 TP 304 / SS Duplex / Titanium Gr 2

Weight : 18 MT



Brine Chiller – Johnson Controls

Design Code: ASME Section VIII Div. 1 / TEMA

MOC : SA 516 Gr 70 / SA 334 Gr 6

Weight : 18 MT



AES Tube Bundle – Essar Oil Ltd. Vadinar

Design Code: ASME Section VIII Dev. 1/ TEMA

MOC :

Tubes: Cupro Nickel 70:30

Tubesheet Carbon Steel with 10 mm thick Cupro Nickel 70:30 Cladding

Weight : 15 MT

Qty : 1 no.



AES Tube Bundle – Essar Oil Ltd. Vadinar

Design Code: ASME Section VIII Dev. 1/ TEMA

MOC :

Tubes: Cupro Nickel 90:10

Tubesheet Carbon Steel with 10 mm thick Cupro Nickel 90:10 Cladding

Weight : 18 MT

Qty: 3 Nos.



BKU Tube Bundle – HZL. Debari

Design Code: ASME Section VIII Dev. 1/ TEMA

MOC :

Tubes: SA 179

Tubesheet Carbon Steel

Weight : 10 MT

Qty: 1 No.



BKU Tube Bundle – ORPIC. Sohar Refinery

Design Code: ASME Section VIII Dev. 1/ TEMA

MOC :

Tubes: SA 213 TP 316L

Tubesheet SA 182 F 316 L

Weight : 18 MT



BKU Tube Bundle – Essar Oil Ltd. Vadinar

Design Code: ASME Section VIII Dev. 1/ TEMA

MOC :

Tubes: SA 179

Tubesheet Carbon Steel

Weight : 15 MT



AES Tube Bundles Re-Tubing – ONGC. Uran

Design Code: ASME Section VIII Dev. 1/ TEMA

MOC :

Tubes: SA 213 TP 410

Tubesheet SA 266 Gr 2

Weight : 6 MT

QTY : 5 Nos.



OUR CLIENTELE - INTERNATIONAL



Rolls-Royce®



**SAMSUNG
ENGINEERING**



OUR CLIENTELE - INTERNATIONAL



الشركة العمانية الهندية للسماد ش.م.ع.م.
Oman India Fertiliser Company S.A.O.C.



CARBOTRADE WORLDWIDE



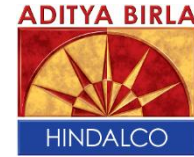
Can Can for manufacturing & Filling Cans



INDORAMA
EXTRE PETROCHEMICALS

OUR CLIENTELE - DOMESTIC

Indian Oil Corporation Limited



ThyssenKrupp Industries India



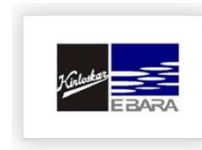
SULZER



OUR CLIENTELE - DOMESTIC



SIEMENS



OUR CLIENTELE - DOMESTIC



THIRD PARTY / CONSULTANTS



THIRD PARTY / CONSULTANTS



Visit us @

Pressure Vessels (India)

J – 499, MIDC, Bhosari, Pune,
Maharashtra, India
411026

Email : info@pvipune.com

Phone : +91 – 20 – 27130020

Website : www.pressurevesselsindia.com



THANK YOU !